

Other products from GSD

stand alone products

GSD also offers fully functional standalone door controls for less complex door management. This attractive design, with modern aesthetics, will complement any building.

- GSD Digital Keypad
- GSD Proximity Switch
- GSD Biometric Switch

Features:

- 50 users
- Access control
- Door monitoring
- Manager user
- Fire and intruder alarm interface
- Backlighting
- Tamper resistant
- 5 Amp relays
- Indoor or outdoor use
- Robust polycarbonate housing with stainless steel keys
- Mounts onto a standard electrical back box

	GSD 2 DOOR DIGITAL KEYPAD	GSD DIGITAL KEYPAD	GSD PROXIMITY SWITCH	GSD BIOMETRIC SWITCH
Multi format RFID reader			✓	
PIN Access	✓	✓		✓
FingerPrint Access				✓
IP Rating	IP67	IP67	IP67	IP65
No of doors controlled	2 door	1 door	1 door	1 door
Power	12v to 24v AC or DC	12v to 24v AC or DC	12v to 24v AC or DC	12v DC only



Contents

Operation Instructions 2

Installation Diagrams 3

Wiring Diagrams 4

Enrolling Door Controls 8

Finger Placement 10



Technical Specs

Power Supply	12V DC only
Current consumption	70mA
Current consumption with load (max)	100mA
Relay Contact Rating	5 Amps /240V ac
Operating Temperature	-20 ℃ to +60 ℃
Moisture Resistance	IP 65
Dimensions - Surface Mount	W. 87mm D. 35mm H. 160mm
Number of Users	10000

Restoring Factory Settings

Code	Description
55	Restoring Factory Default Settings

Example: To Restore Factory Default Settings

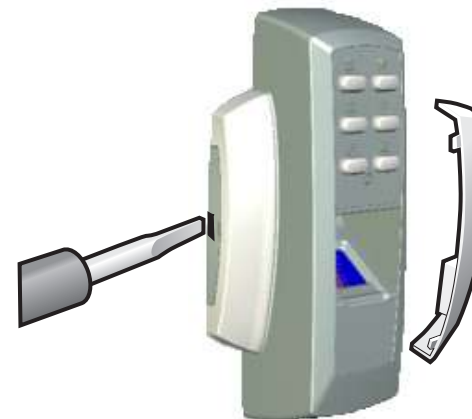
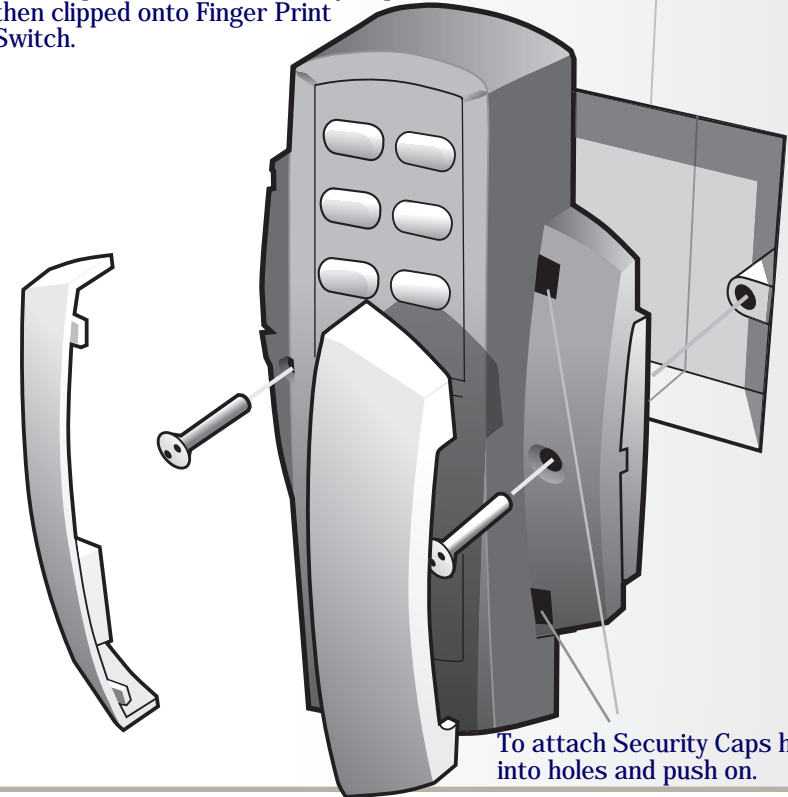


Note: If programming code is lost, Remove the Tamper Wing and hold down the 5 key during power-up and enter the default programming code '6666'.

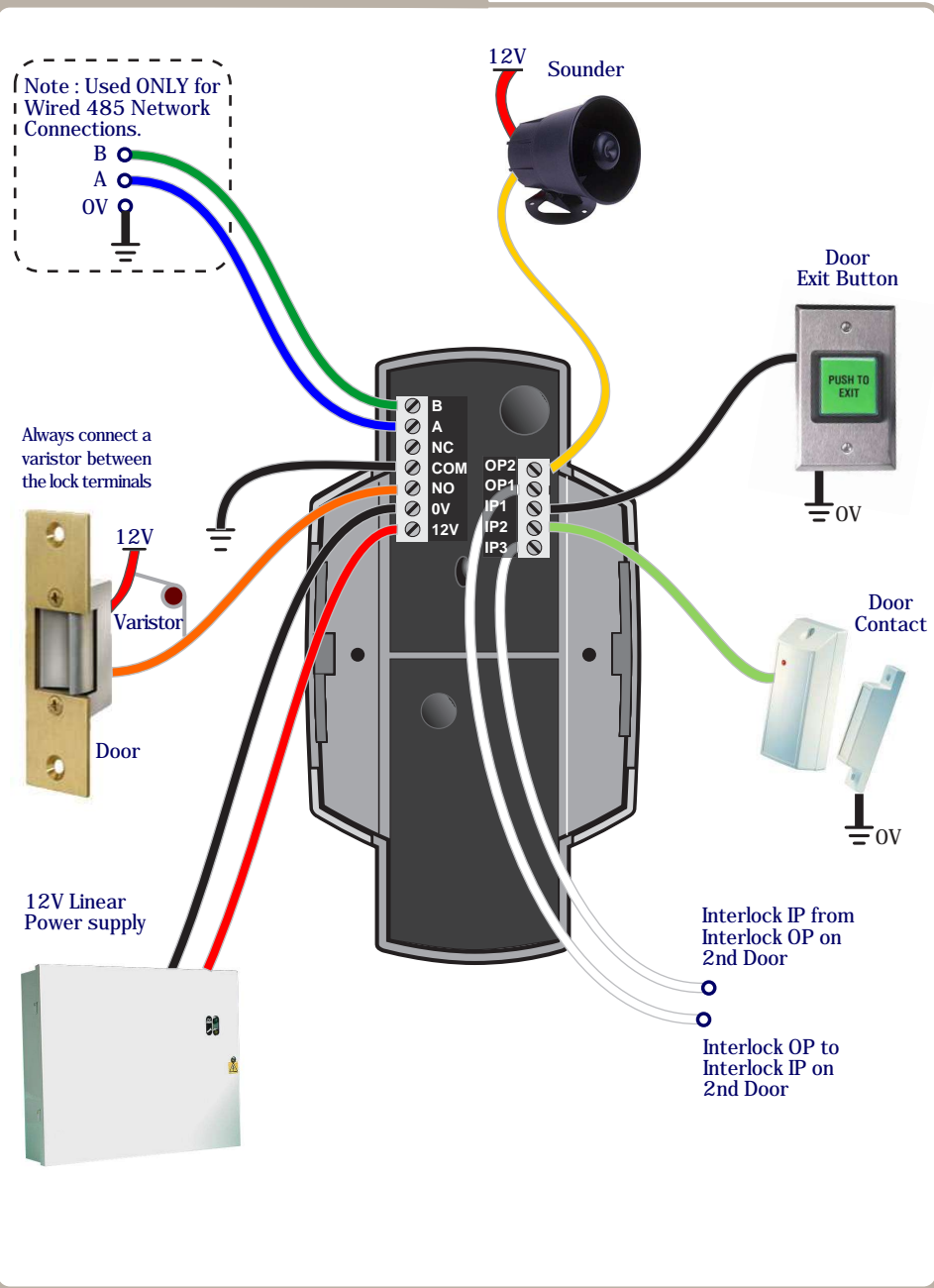
Note: The Door Control can only be defaulted if it is not part of a network. i.e If the Door Control has not been assigned an address.

Flush Mounting

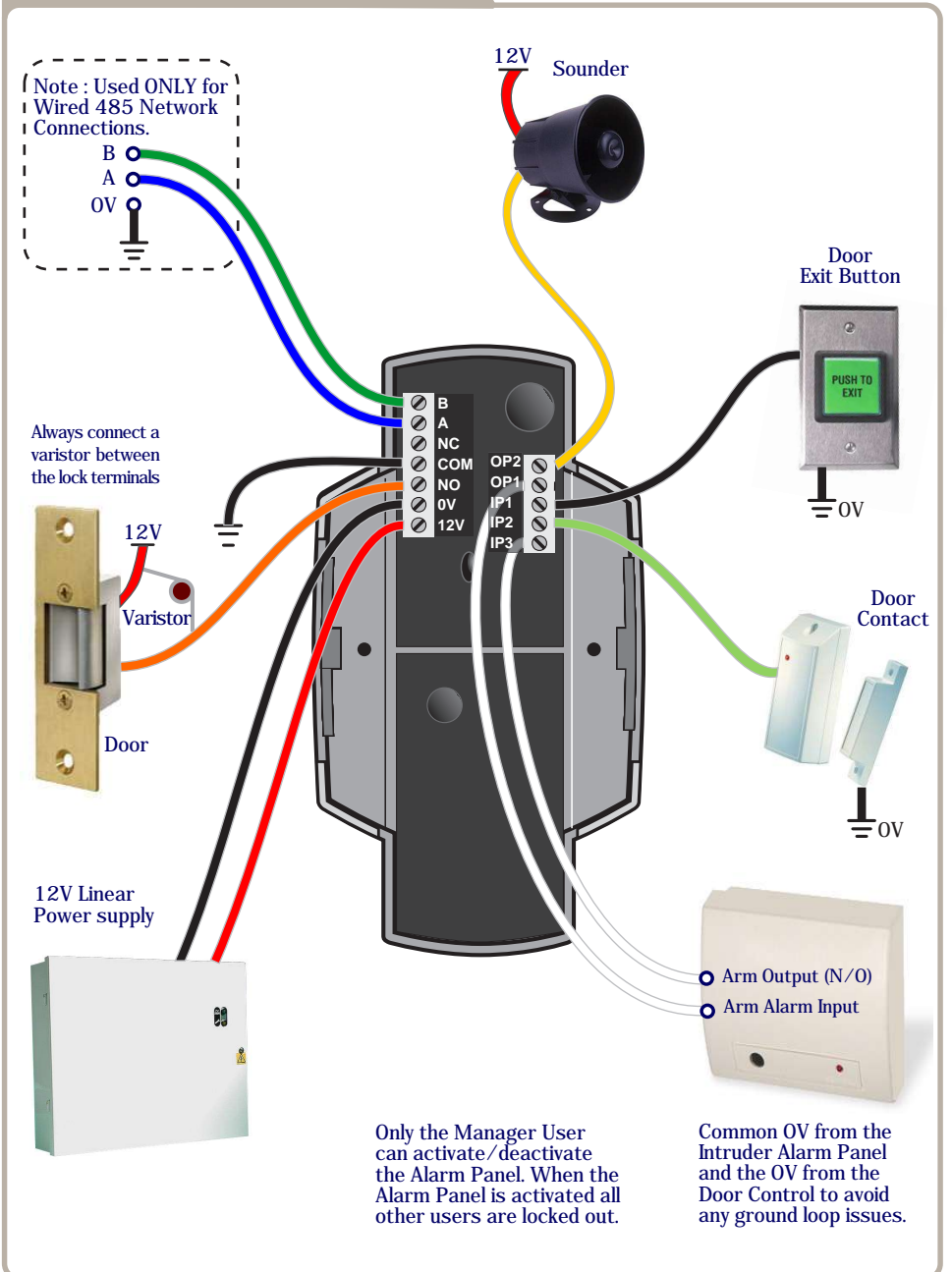
Finger Print Switch is mounted to pattress box using security screws provided. Both Security Caps are then clipped onto Finger Print Switch.



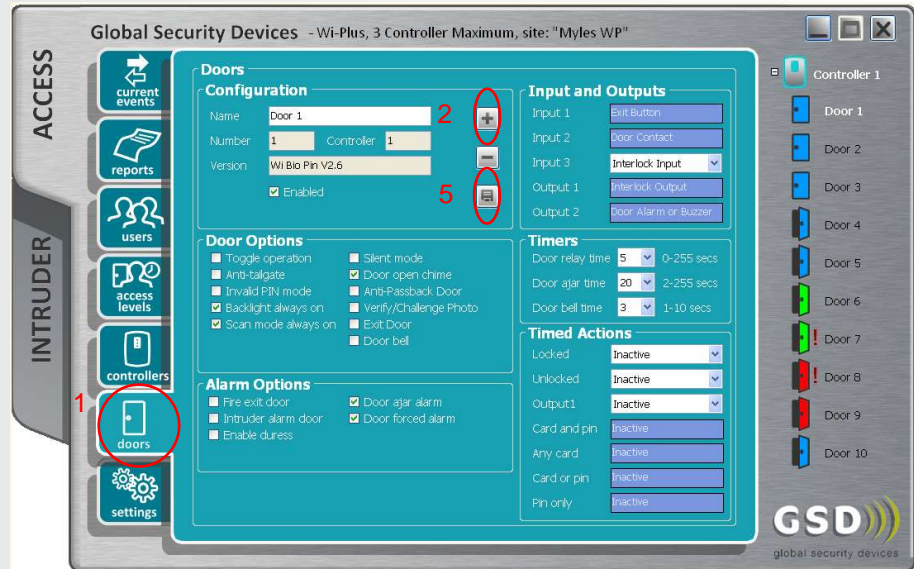
Wiring Diagrams with Interlock Connections



Wiring Diagrams with Alarm Panel Connections



Adding Door Controls



Step	Description
1	Click the Doors Icon on the left hand toolbar
2	Click 'Add New Door'
3	The Door is added to the Controller.
4	Configure the required Door settings : Door Timers, Alarm Options, Door Options, Timed Actions, Inputs & Outputs.
5	Click 'Save' to transmit the changes to the GSD Controller.

Note: Placing the mouse cursor over a door feature will display a description of the feature.

Assigning a Door Address on Wireless Network

Step	Description
1	On the Controller screen: Click 'Allow Doors to Join this Controller'
	All Door Controls that don't have an address start to beep out the next available address.
2	Hit any key on the 'beeping' Door Control to assign this address.
	When a Door Control is assigned an address, all unassigned Door Controls will start to beep the next available address.
3	When all doors are assigned: Click 'Secure Network'

Assigning a Door Address on a Wired 485 Network

Step	Description
1	Right Click on the Controller Icon & select 'Manually Assign Addresses'
	Follow Step 2 above to complete the process.

Correct Finger Placement



Note: Ensure that the finger is centered and placed flat to the surface and fully covers the sensor window.

Note: Finger must remain on the sensor window until the door control acknowledges that the finger has been scanned by sounding a beep and turning off the red light. This will take approximately 1 second.

Incorrect Finger Placement



Note: Incorrect placement : finger does not fully cover the sensor window. The door control will not respond and the red light will not turn off if the sensor window is not fully covered by the finger.